



# CLYDE MARINE SERVICES LTD



## ASD TUG

## CMS WARRIOR

### GENERAL

DELIVERY DATE	October 2015
BASIC FUNCTIONS	Towing and pushing
CLASSIFICATION	MCA Workboat Category 2 Bureau Veritas
NOTATION	1 ❌ Hull • MACH Tug Unrestricted Navigation AUT UMS

### DIMENSIONS

LENGTH O.A.	22.7 m
BEAM O.A.	10.40 m
DEPTH	4.50 m
DRAUGHT AFT	4.40 m
DISPLACEMENT	400 ton
GRT	165

### TANK CAPACITIES

FUEL OIL	66.6 m <sup>3</sup>
FRESH WATER	7.9 m <sup>3</sup>
SEWAGE	2.9 m <sup>3</sup>

### PERFORMANCES

BOLLARD PULL AHEAD	52.3 Te
BOLLARD PULL ASTERN	47.8 Te
SPEED	12.7 knots

### PROPULSION SYSTEM

MAIN ENGINES	2 X Caterpillar 3512C TA
TOTAL POWER	3000 bkW (4023 bhp) at 1600 rpm
PROPULSION	2 X Rolls Royce US

### AUXILIARY EQUIPMENT

GENERATOR SET	2 X Caterpillar C4.4T
CAPACITY	65.5 kVA, 50Hz, 230/400V, 3 phase

### TOWING EQUIPMENT

FORE DECK WINCH	DMT
CAPACITY	150 M x 88 mm DIA
AFT DECK	Towing Hook SWL 650 KN

### ACCOMMODATION

2 X Single Berth Cabins  
2 X 2 Berth Cabins  
All accommodation & wheelhouse areas are air conditioned

### NAUTICAL AND COMMUNICATION EQUIPMENT

Radar	Furuno FAR 2117
Compass	Cassens and Plath
VHF	Sailor Compact 6222
GPS	Furuno GP-150
Autopilot	Simrad AP-70
Navtex	Furuno NX-700
AIS	Furuno FA-150



# CLYDE MARINE SERVICES LTD



## CONTACT DETAILS

### CLYDE MARINE SERVICES LTD

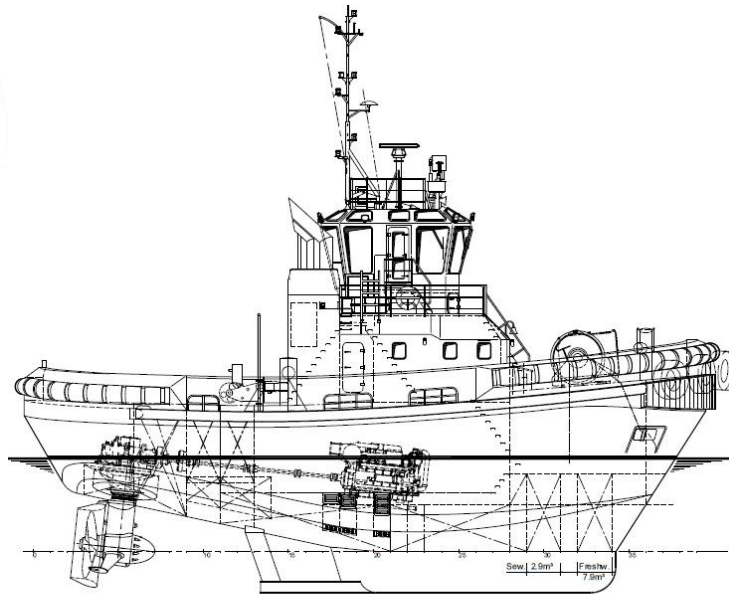
Victoria Harbour,  
GREENOCK,  
PA15 1HW  
SCOTLAND

**Tel:** 01475 721281

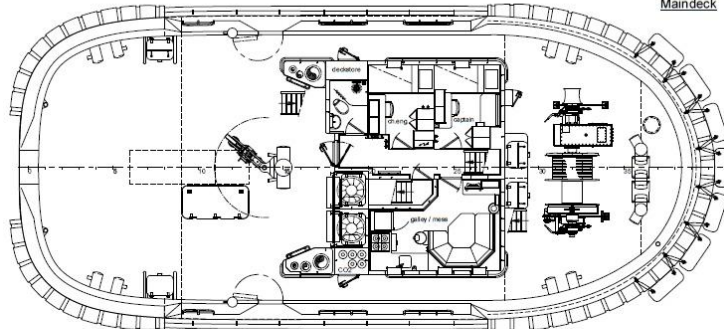
**Fax:** 01475 888023

**Email:** [hamish.munro@clyde-marine.co.uk](mailto:hamish.munro@clyde-marine.co.uk)

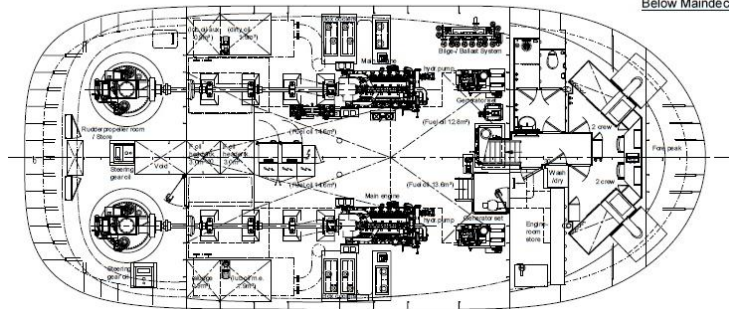
**[www.clyde-marine.co.uk](http://www.clyde-marine.co.uk)**



Maindeck



Below Maindeck



## CONTACT DETAILS

### CLYDE MARINE SERVICES LTD

Victoria Harbour,  
GREENOCK,  
PA15 1HW  
SCOTLAND

**Tel:** 01475 721281

**Fax:** 01475 888023

**Email:** [hamish.munro@clyde-marine.co.uk](mailto:hamish.munro@clyde-marine.co.uk)

**[www.clyde-marine.co.uk](http://www.clyde-marine.co.uk)**