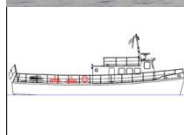




CLYDE MARINE SERVICES LTD



PASSENGER / CREW TENDER

80 Persons up to 3 miles offshore

ROVER

GENERAL

DELIVERY DATE
BASIC FUNCTIONS
CLASSIFICATION

1964
Personal Transport
MCA Class IV, V, VI + VI(A))
certificates for up to 80 persons
MCA Workboat Code Category 3

DIMENSIONS

LENGTH O.A. 19.8 m
BEAM O.A. 4.9 m
DEPTH AT SIDES 2.5 m
DRAUGHT AFT 1.4 m
DISPLACEMENT 49 ton
GRT 48

TANK CAPACITIES

FUEL OIL 1100 litres
FRESH WATER 160 litres

PERFORMANCES

SPEED 10.5 knots

PROPULSION SYSTEM

MAIN ENGINES 2x Kelvin
TOTAL POWER 134 KW (180 bhp)
PROPELLERS 2x Bronze fixed pitch

AUXILIARY EQUIPMENT

GENERATOR SET 1 X 9 KVA

ACCOMMODATION

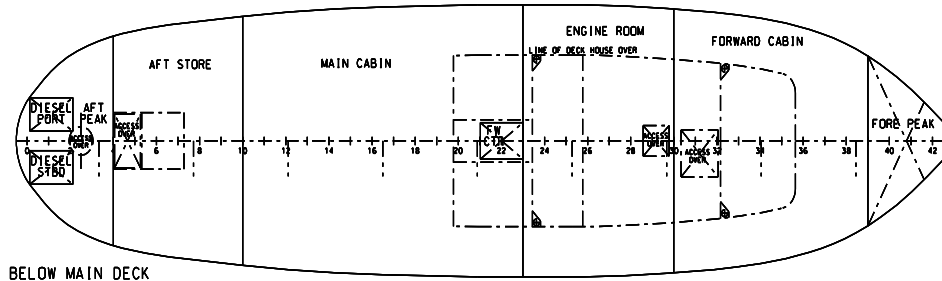
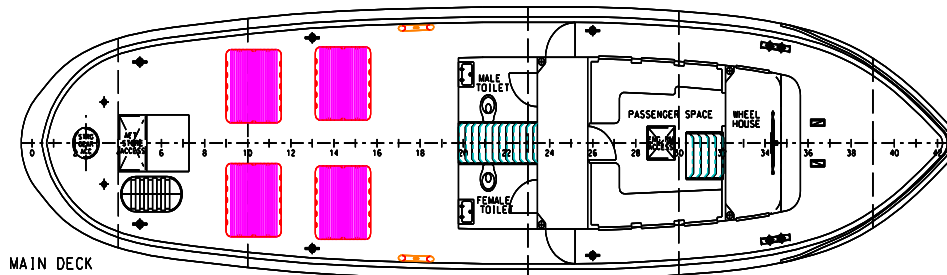
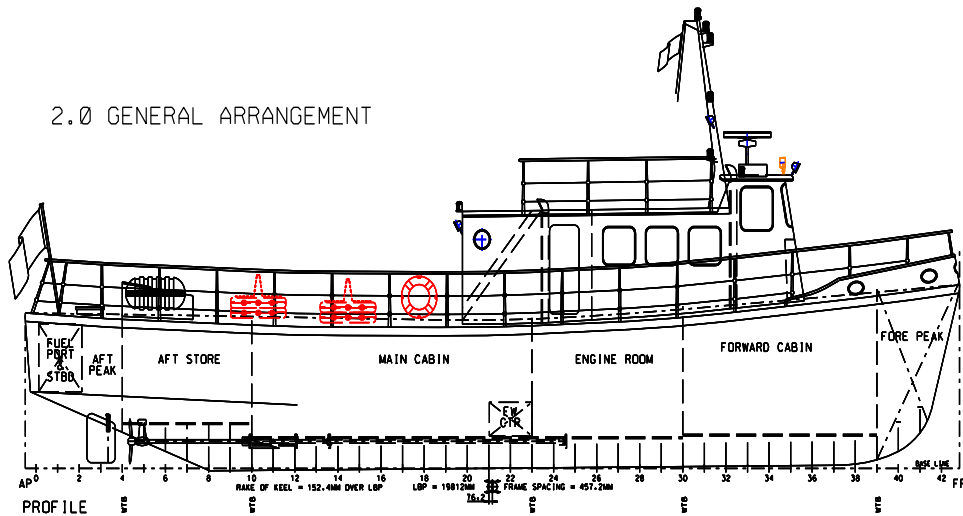
The vessel is certified to transport 80 persons up to 3 miles from land and is equipped with a galley and sanitary facilities

NAUTICAL AND COMMUNICATION EQUIPMENT

RADAR SYSTEM Koden MD 3400
COMPASS Sestrel
VHF Sailor RT2048
CHART PLOTTER Simrad
SEARCHLIGHT 24 V 250 W Pesch
GPS Francis

CLYDE MARINE SERVICES LTD

2.0 GENERAL ARRANGEMENT



CONTACT DETAILS

CLYDE MARINE SERVICES LTD

Victoria Harbour,

GREENOCK,

PA15 1HW

SCOTLAND

Tel: 01475 721281

Fax: 01475 888023

Email: hamish.munro@clyde-marine.co.uk

www.clyde-marine.co.uk