



# CLYDE MARINE SERVICES LTD



## PASSENGER / CREW TENDER (ROAD TRANSPORTABLE)

30 Persons up to 3 miles offshore

FENCER

### GENERAL

DELIVERY DATE  
BASIC FUNCTIONS  
CLASSIFICATION

1976  
Personnel Transport  
MCA Class IV, V, VI + VI(A)  
certificates for up to 30 persons  
MCA Workboat Code Category 2

### DIMENSIONS

LENGTH O.A. 11.0 m  
BEAM O.A. 4.0 m  
DEPTH AT SIDES 1.83 m  
DRAUGHT AFT 1.3 m  
DISPLACEMENT 16 Te.  
GRT. 18

### TANK CAPACITIES

FUEL OIL 1090 litres  
FRESH WATER 90 litres

### PERFORMANCES

SPEED 9.0 knots

### PROPULSION SYSTEM

MAIN ENGINES 1 X Gardner  
TOTAL POWER 95 KW (127 bhp)  
GEARBOXES 3:1  
PROPELLERS 1x fixed pitch 35" diam'

### ACCOMMODATION

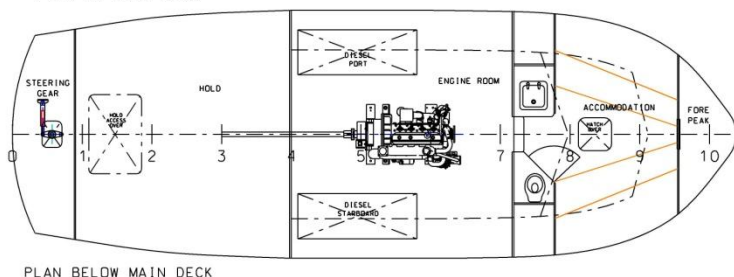
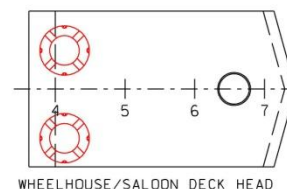
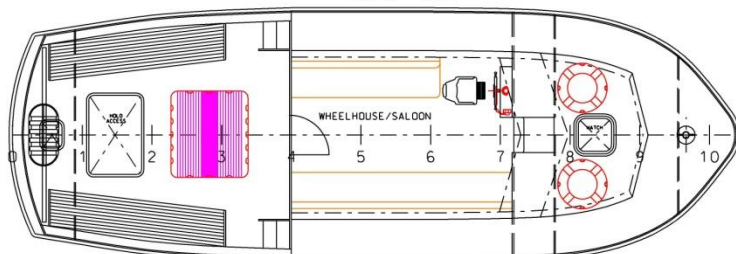
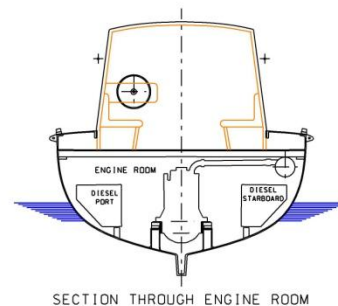
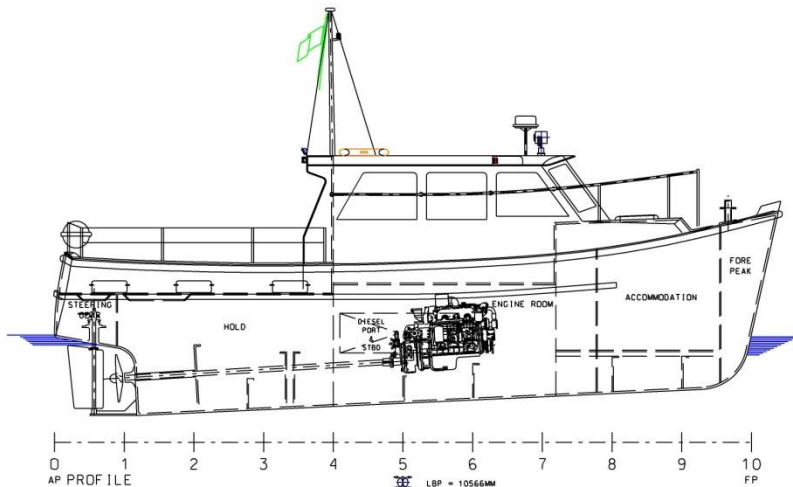
The vessel is certified to transport 30 persons up to 3 miles from land and is equipped with a small galley and sanitary facilities

### NAUTICAL AND COMMUNICATION EQUIPMENT

RADAR SYSTEM Koden MD 3400  
COMPASS Sestrel  
VHF Sailor RT2048  
CHART PLOTTER Simrad CP31  
SEARCHLIGHT Francis 24 V 250 W  
GPS



# CLYDE MARINE SERVICES LTD



## CONTACT DETAILS

### CLYDE MARINE SERVICES LTD

Victoria Harbour,  
GREENOCK,  
PA15 1HW  
SCOTLAND

Tel: 01475 721281

Fax: 01475 888023

Email: [hamish.munro@clyde-marine.co.uk](mailto:hamish.munro@clyde-marine.co.uk)

[www.clyde-marine.co.uk](http://www.clyde-marine.co.uk)